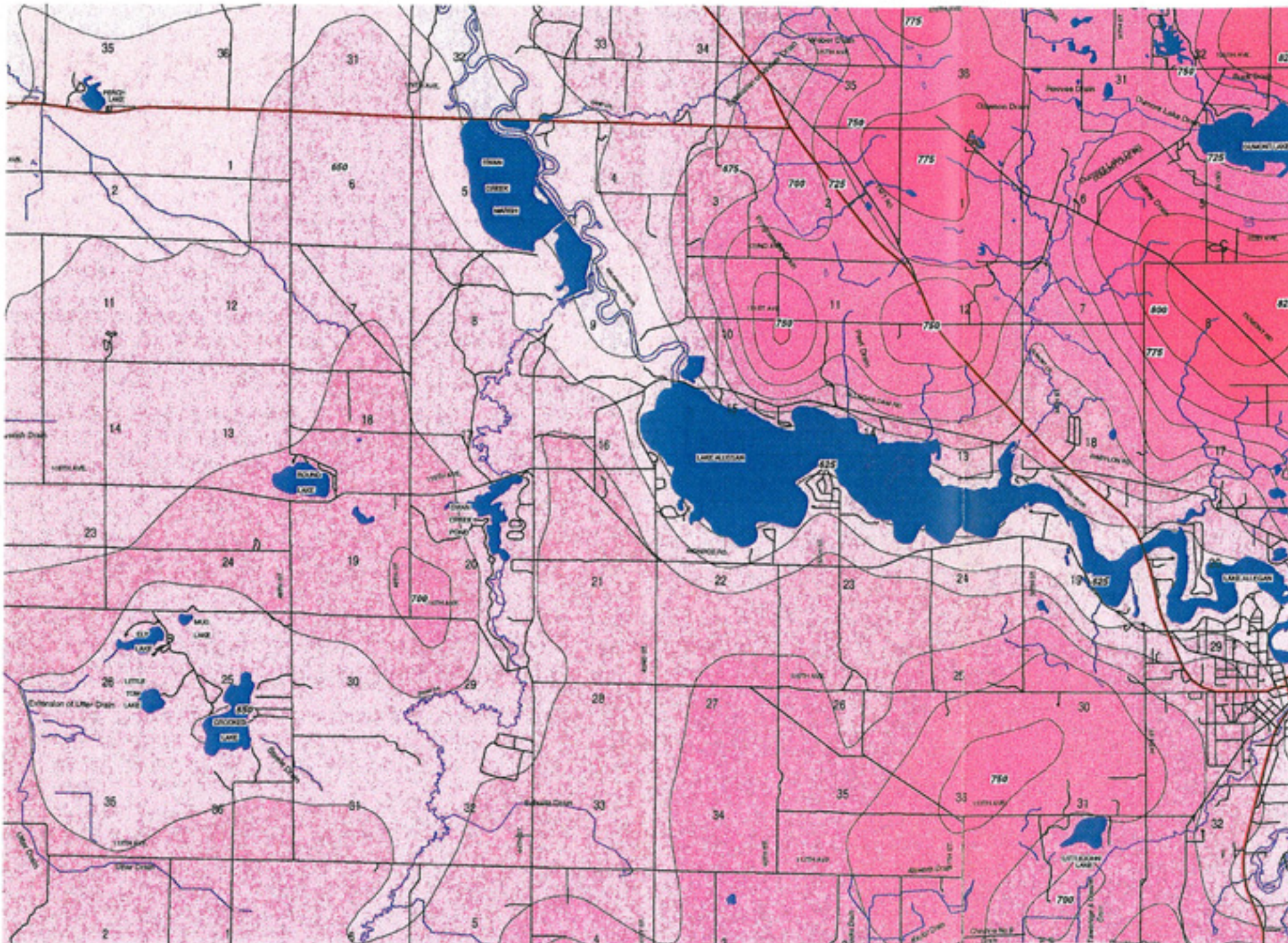


Valley Twp. 25' Foot Contour Topography



Contours in 25 Foot Increments

950 to 975	(6)
925 to 950	(7)
900 to 925	(12)
875 to 900	(12)
850 to 875	(19)
825 to 850	(22)
800 to 825	(24)
775 to 800	(20)
750 to 775	(29)
725 to 750	(15)
700 to 725	(22)
675 to 700	(10)
650 to 675	(18)
625 to 650	(10)
600 to 625	(6)
575 to 600	(1)

Scale 1 : 60,000